

Contents 3/09

ARTICLES

ELISABET HASSELBERG OLSSON: TRANQUIL LANDSCAPE	6
ON THE CARPET: MÄRTA MÅÅS-FJETTERSTRÖM JUBILEE & TEXTILE OF THE YEAR	9
THEME ECCLESIASTICAL TEXTILES	
MARGARETA RIDDERSTEDT VESTMENTS & TEXTILE FURNISHINGS IN SWEDISH CHURCHES	10
ÅSA MARTINSSON OCH MARTIN ERIKSSON THE CHASUBLE: CHANGING SHAPE AND COLOUR	14
STEEPED IN HISTORY, LICIU AND HV LICIU	16
WESTRAGOTHIA	17
BIRGITTA NORDSTRÖM ATTENDING TO THE LIVING AND THE DEAD	18
ULLA PARKDAL WITH HER OWN TEXTILE LANGUAGE	20
KARIN JÖNSSON OCH GUNVOR JOHANSSON CHURCH TEXTILE COMMISSIONS, A CLOSE COLLABORATION	22
NEW TEXTILES FOR TRÖNÖ CHURCH	24
FUNERAL PALL BY PASI VÄLIMAA	26
ECCLESIASTICAL TEXTILES, CARE & CONSERVATION	27
TEXTILE ART TREASURES SAVED FOR POSTERITY	29
BRITT-MARIE J GLYSSBO'S TEXTILES	32
DOUBLECLOTH, DUAL PURPOSE	33
TEXTILE NOTIONS: GUNILLA LAGERBIELKE MARIMEKKO	54 55

PROJECTS

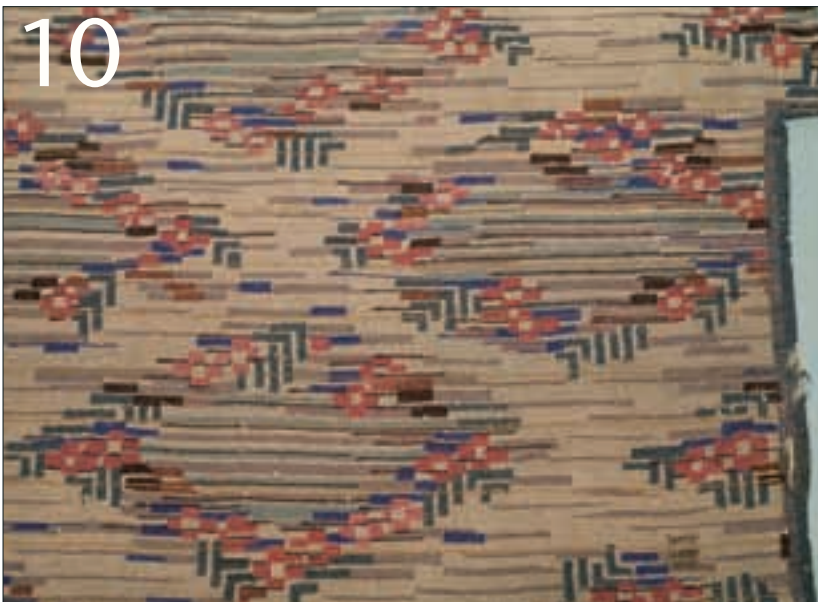
MALOU ANDERSSON: I LOVE ECO	36
DOUBLECLOTH PLACEMATS & BAGS	38
PLACEMATS IN LINEN	39
RUGS WITH RAGS, LINEN AND WOOL	40
REED CANARY GRASS TICKING	41
VÄRÖ BACKA HANDTOWEL	42
TWO DRÄLL TABLECLOTHS, ONE WARP	43
PAPER YARN WEAVES	44
A PATTERNED WEAVE FINDS ITS WAY BACK HOME	45
PICK-UP DIVERSIFIED PLAIN WEAVE	48
ULLACARIN LUNDH: SPANISH LACE, TWO QUALITIES	50
WINNIE POULSEN: DOUBLE-WIDTH TABLECLOTHS	52
NEW KNIT LIT	56

6



22

10



page 6 Elisabet Hasselberg Olsson, "Light", 2005

page 10 Ecclesiastical textiles, Margareta Ridderstedt: Rölakan rug for the Engelbrekt Church, Stockholm 1914 designed by Märta Måås-Fjetterström, woven at the Swedish Handcraft Association

page 22 Ecclesiastical textiles: Gunvor Johansson and Karin Jönsson

ON THE CARPET	9, 56
RESUMÉ	58
BOOKSHELF	59
TO ORDER	65
EXHIBITIONS	66

Vävmagasinet/Scandinavian Weaving Magazine can be ordered directly in the following countries:

English edition:

Great Britain: Fibrecrafts, Tel: 01483 565800. Fax: 01483 565807
www.fibrecrafts.com, e-mail: sales@fibrecrafts.com

Australia: Glenora Weaving & Wool, Tel/Fax: 0242 340422
www.glenoraweaving.com.au, e-mail: Christine@GlenoraWeaving.com.au

Canada: Camilla Valley Farm Weavers' Supply, Tel: (519) 941-0736
Fax: (519) 941-0804, www.camillavalleyfarm.com
e-mail: nmanners@camillavalleyfarm.com

Swedish edition with Japanese translation:

Japan: Kazu Textile, Tel: (813)3818-8817. Fax: (813) 3818-8819
www.kazutextile.jp, e-mail: info@kazutextile.jp

Swedish edition with German translation:

Bundesrepublik Deutschland: Karin Meyer, Swedenform
Tel: (0049)7304-919137. Fax: 7304-919138. www.swedenform.de
e-mail: swedenform@t-online.de

Schweiz: Zürcher Stalder AG, Tel: 034-4484242. Fax: 034-4484243
www.zsag.ch, e-mail: zsag@zsag.ch

Swedish or English edition with Dutch translation:

The Netherlands: Venne-Colcoton Unikat, Tel: (0031)45 575 45 57
Fax: (0031)45 562 03 35. www.vennecolcoton.com
e-mail: info@vennecolcoton.com

Copyright: TB Ignell AB. All rights reserved. No part of this magazine may be republished without written permission of the publisher.

Prices in English: Subscription for Europe except Sweden: SEK 280. English edition or German supplement: SEK 320.

Countries outside Europe, air mail: SEK 360. English edition or German supplement, air mail: SEK 400.