

May blossom tablecloth

DESIGN AND WEAVE: BIRGITTA ANDERSSON

A spring feel to this tablecloth, with its bright colouring. The warp is cottolin for both variations, while there is lintow weft in one and cottolin weft in the other. The same pattern on a narrower set-up can be used for a pretty handtowel.

TECHNIQUE

Huckaback variation, 6 shafts and 6 pedals

WARP 22/2 cottolin, 6000 m/kg, yellow-green col.nr. 152, blue col.nr. 278, green col.nr. 280, brown col.nr. 208 Borgs Vävgarner

WEFT Lintow 8, 5400 m/kg, light green col.nr. 109, blue col.nr. 515, brown col.nr. 1301
22/2 cottolin, 6000 m/kg, yellow-green col.nr. 152, blue col.nr. 278, green col.nr. 4274, brown col.nr. 208 Borgs Vävgarner

REED 45/10, 1 end to a heddle and 2 ends to a dent

SETT 9 ends/cm

WIDTH IN REED Tablecloth: 103.5 cm; Handtowel: 53.5 cm

FINISHED DIMENSIONS Tablecloth: ca 102 x 102 cm
Handtowel: 52 x 70 cm

WEFT SETT 9 picks/cm

NR. OF ENDS Tablecloths: 936; Handtowel: 488

YARN REQUIRED per metre of warp: Tablecloths: ca 65 g yellow-green, ca 65 g blue, ca 35 g green, ca 5 g brown
Handtowels: ca 30 g yellow-green, blue and green, ca 2 g brown

YARN REQUIRED per woven metre:

Tablecloths:

lintow, ca 120 g light green, ca 80 g blue, ca 10 g brown;
cottolin, ca 70 g yellow-green, ca 70 g blue, ca 35 g green
ca 10 g brown

Handtowels:

lintow, ca 70 g light green, ca 30 g blue, ca 5 g brown
cottolin, ca 30 g yellow-green, ca 30 g blue, ca 30 g green,
ca 5 g brown

WARPING, WEAVING, MAKING UP

Weave a 2 cm hem allowance. Follow the shedding order. Measure each check with the warp off tension to check it is square. If necessary, use a stretcher.

The hem is stitched down by the first pattern border.

WARP SEQUENCE, TABLECLOTHS

YELLOW	182						182	= 364
BLUE			180			180		= 360
GREEN		1		1	180	1		= 196
BROWN		1		1		1		= 16
		x 4		x 4		x 4		= 936

WARP SEQUENCE, HANDTOWEL

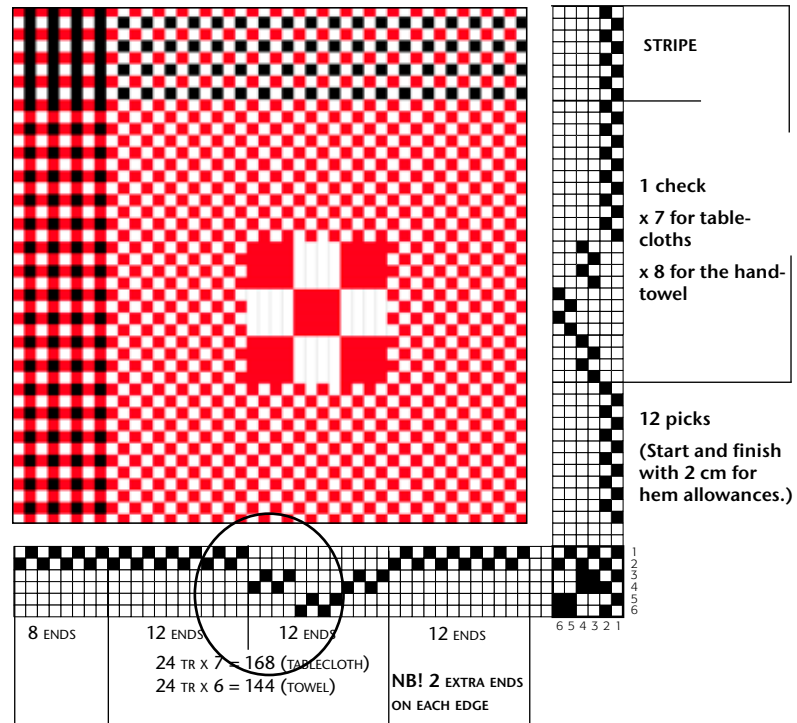
YEL.GR	158							= 158
BLUE				156				= 156
GREEN			1		1	158		= 166
BROWN			1		1			= 8
			x 4		x 4			= 488

ENTRY SEQUENCE TABLECLOTH

2 ENDS
188 ENDS x 4 (SQUARES + STRIPES) = 752
180 ENDS
2 ENDS

ENTRY SEQUENCE HANDTOWEL

2 ENDS
164 ENDS x 2 (SQUARES + STRIPES) = 328
156 ENDS
2 ENDS



WEFT SEQUENCE, TABLECLOTH, LINEN

Hem 2 cm, light green
Check 1+3+5 7 sets of huckaback motifs in light green
Check 2 + 4 7 sets of huckaback motifs in blue
Stripes between 1 pick light green, 1 pick brown x 4
Hem 2 cm, light green

The handtowel woven in linen has 8 sets of huckaback motifs in 3 checks: check 1 in light green, check 2 in blue, check 3 in light green. Stripes in brown + light green before and after the central check.

WEFT SEQUENCE, TABLECLOTH, COTTOLIN

Hem 2 cm, yellow-green
Check 1 7 sets of huckaback motifs in yellow green
Stripe 1 pick yellow green, 1 pick brown x 4
Check 2 7 sets of huckaback motifs in blue
Stripe 1 pick yellow green, 1 pick brown x 4
Check 3 7 sets of huckaback motifs in green
Stripe 1 pick yellow green, 1 pick brown x 4
Check 4 7 sets of huckaback motifs in blue
Stripe 1 pick yellow green 1 pick brown x 4
Check 5 7 sets of huckaback motifs in yellow green
Hem 2 cm, yellow-green

The handtowel woven in cottolin has 8 sets of huckaback motifs in 3 checks: check 1 in yellow-green, check 2 in blue, check 3 in green.