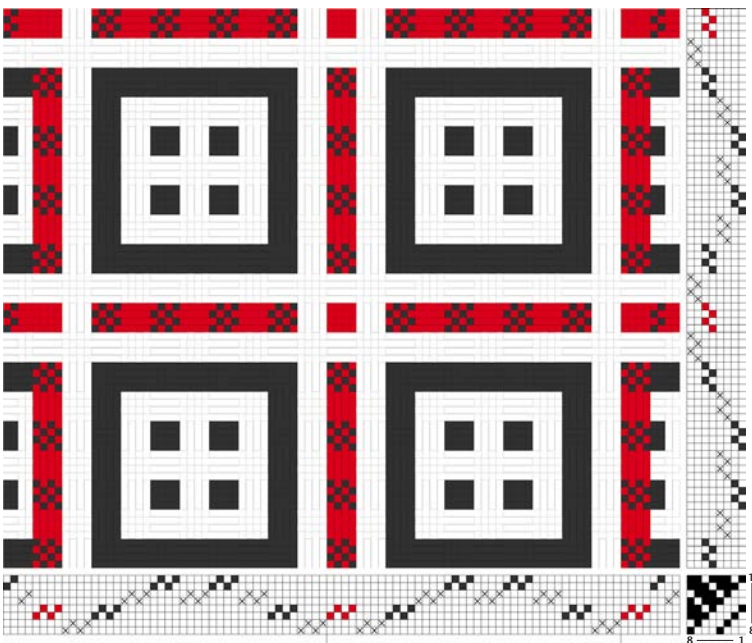


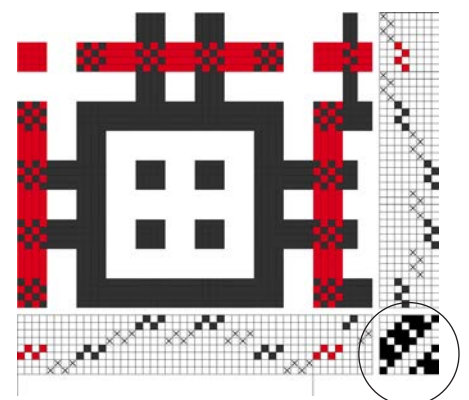
Corrected pedal tie-up for the Scarf in Deflected Double Weave, project 6, 3/12.

The directions for Berthe Forchhammer's scarf unfortunately included the wrong tie-up, which was in fact for the scarf shown to the left. The scarf to the right (the one we showed) is woven with the pedal tie-up in the draft below the picture.

Forchhammer gives her apologies, while drawing attention to the range of variations to be found by using the same weave set-up.



This is the tie-up for the scarf shown above.



This tie-up produces the patterning on the scarf shown in 3/12.

- = COKE, DARK GREY
- = RED
- × = UNBLEACHED