

# Ellen & Karin gets together

DESIGN/WEAVE: BIRGITTA JOHANSSON

*The original for this repp rug with pick-up patterning is in Ellen Key's Strand by Omberg in Östergötland, see the article on page 6. Johansson wove it on a striped warp, similar to the one Karin Larsson wove for Sundborn. Both were made on the same warp, bringing these two women together in a contemporary textile context.*

## TECHNIQUE

Repp, 6 shafts and 4 pedals

**WARP** 16/2 cotton, blue col.nr. 134, 12,960 m/kg, Holma Helsingland  
+ antique white, 13,000 m/kg, Garnhuset in Kinna

**WEFT** Thick: bleached stranded yarn, 500 m/kg, Kampes spinning mill

**Thin:** 16/2 cotton, antique white (as for the warp), Garnhuset in Kinna

**REED** 90/10, 2 ends to a heddle, 4 ends to a dent

**SETT** 36 ends/cm

**WIDTH IN REED** ca 54 cm

**WEFT SETT** 2 thick and 2 thin picks/cm

**NR. OF ENDS** 1952 (976 of each shade)

**YARN REQUIRED** per metre of warp: ca 80 g blue  
80 g antique white

**YARN REQUIRED** per woven metre ca 220 g stranded yarn,  
ca 10 g 16/2 cotton + for the hems

## WARPING, ENTRY, WEAVING

Warp up with 4 strands, 2 of blue and 2 of white.

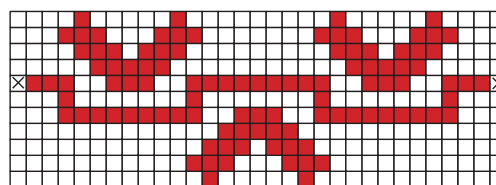
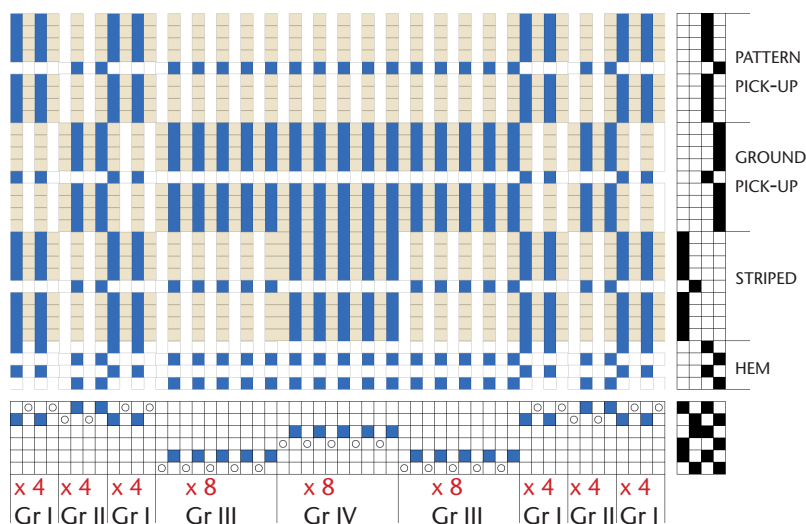
Enter as shown for the pattern arrangement. If you like, tie off the yarn in regular bundles to check the ends are being entered correctly. The hem allowances for both the rugs are woven in doubled 16/2 cotton for 6 cm. The turned hem will measure ca 2 cm.

The rug with pick-up is woven as follows:

Weave plain using the thick weft, depressing pedal 1, and the thin weft, depressing pedal 2, for 10 ribs (thick picks). Then start the pick-up design:

Use the warp stripes to position the patterning as shown in the diagram. (The stripes are raised with pedals 3 and 4 down). One pattern pick-up repeat straddles three stripes, one square = 8 raised ends.

There are two warp stripes to either side that are not part of the pattern pick-up.



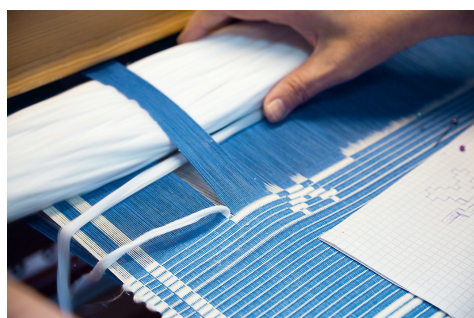
1 square = 8 raised ends = 16 ends  
x = 4 raised ends = 8 ends to complete the pattern  
One pattern repeat is 29 x 16 + 16 ends = 480

## PATTERN ARRANGEMENT

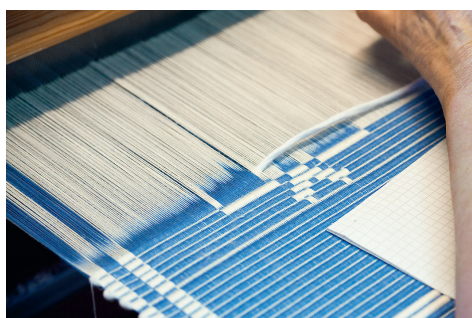
Edge: Gr I 32 ends  
Gr II 32  
Gr I 32

Centre: Gr III 160  
Gr IV 160 x 5  
Gr III 160

Edge: Gr I 32  
Gr II 32  
Gr I 32



Thick pick: pick up the groups of ends that will form the ground, with all the blue ends raised.



Thick pick: pick up the groups of ends that will form the white patterning, with all the white ends raised.



Thin pick: pick up the opposite ends to those picked up for the thick pick.