

# Daldräll in flower

*We saw this daldräll when we visited the Tenhult Weaving Workshop, featured in the previous issue. Our frosty white flowers were woven in white wool which we made up into a coverlet on the whitest sheepskins.*

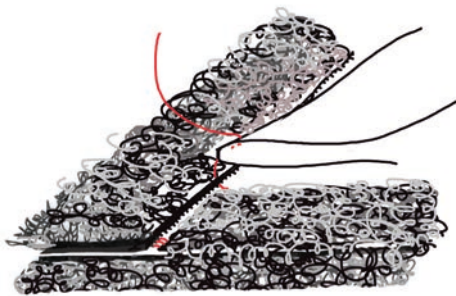
## STRUCTURE

Daldräll, 4 shafts and 6 pedals

WARP	16/2 cotton ca 12,800 m/kg, rose col.nr. 261 Borgs Vävgarner
WEFT	Plain weave: 16/2 cotton, ca 12,800 m/kg, rose col.nr. 256 Pattern: 6/1 Fårö yarn, white, ca 6,000 m/kg wine red col.nr. 1036 Borgs Vävgarner
REED	80/10, 1 end to a heddle and 2 ends to a dent
SETT	16 ends/cm
WIDTH IN REED	70 cm
FINISHED WIDTH	ca 68 cm
WEFT SETT	12–13 pattern + 12–13 plain weave = 1 cm
NR. OF ENDS	1120
YARN REQUIRED	
per metre of warp	ca 90 g
per woven metre	cotton ca 75 g, Fårö yarn ca 160 g

## SHEEPSKIN COVERLET WITH TRIM

Cut the sheepskin with a knife from the leather side, taking care not to cut away the fleece. Cut out 5-6 cm wide pieces for the trim all round. Several strips can be stitched together for longer pieces of trim. With the leather side up and sides straight, stitch the trim all round the sheepskin to meet at the corners. Fold the weaving and sew it on by attaching at the stitches.



## WEAVING

Weave hem allowance in plain weave, using 16/2 cotton.

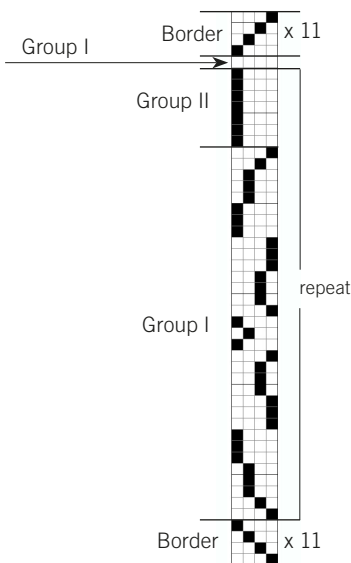
Border + Group 1: 1 square in the block draft shedding order = 2 pattern picks with one pick plain weave after each pattern pick.

Group 2: 1 square in the block pattern shedding order = 1 red pattern pick with plain weave pick after each pattern pick.

## PATTERN DIVISION/ARRANGEMENT

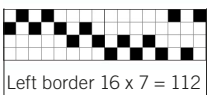
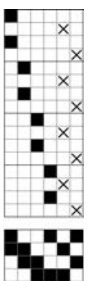
Right border	= 112 ends
Group 1	84 ends
Group 2	32 ends
Group 1	= 84 ends
Left border	= 112 ends
	= 1120 ends

## BLOCK DRAFT SHEDDING ORDER

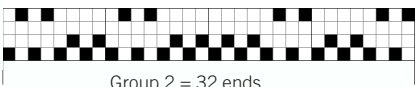


■ = pattern weft,  
Fårö yarn single stranded  
× = ground weft,  
plain weave

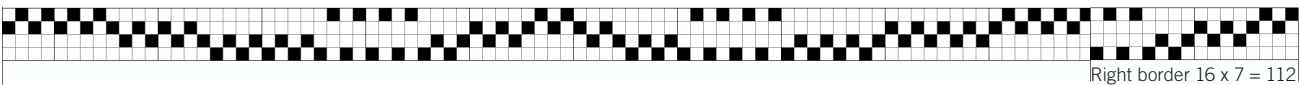
## BORDER, DETAIL



Left border 16 x 7 = 112



Group 2 = 32 ends



Group 1 = 84 ends

Right border 16 x 7 = 112



