

Shadow weave in silk

DESIGN/WEAVE: JANET PHILLIPS

Janet's scarf won her a prize in our weave competition last year. She created an elegant design in grey and white, using shadow weave. Here, the construction is based on colour-and-weave in plain weave, where one lighter yarn alternates with a darker. The lines change direction when the threading or shedding order shifts. Janet Phillips is a weaver and author of the book, *Designing Woven Fabrics*, see the Bookshelf.

TECHNIQUE

Shadow weave, 8 shafts and 8 pedals

- WARP** 20/2 tussah silk, ca 8500 m/kg, grey col.nr. 2565, white col.nr. 2500, Borgs Vävgarner/Zürcher Stalder/Schweiz
- WEFT** as for the warp
- REED** 55/10, 1 end to a heddle, 2 ends to a dent
- SETT** 11 ends/cm
- WIDTH IN REED** ca 29 cm
- SELVAGE** 2 ends unentered on either side. When weaving, pass the shuttle over the floating selvage on the way in and under on the way out of the shed.
- WEFT SETT** 11 picks/cm
- NR. OF ENDS** 324 (4 unentered)
- YARN REQUIRED** per metre of warp: ca 40 g of each shade
- YARN REQUIRED** per woven metre: ca 40 g of each shade

WEAVING

The shedding order shows one quarter of the whole pattern. After weaving 10 picks on pedals 7 and 8, the shedding order changes and 10 picks are woven with pedals 5 and 6 alternating, etc. Block II is woven with the dark weft in the pedal 2 shed and the light weft in the pedal 1 shed. See the contracted shedding order.



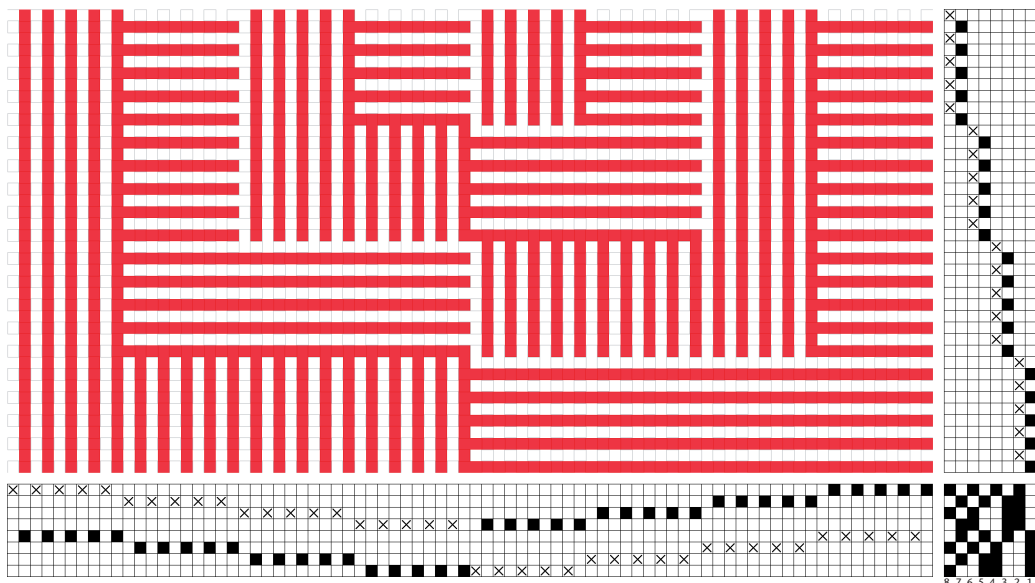
WARP SEQUENCE

| | | | |
|-------|---|---|---|
| GREY | 2 | 1 | 2 |
| WHITE | | 1 | |

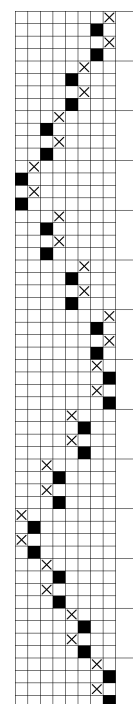
x 160

WARP AND WEFT

X = LIGHT
■ = DARK



80 ENDS x 4 = 320 + 2 UNENTERED ENDS ON EITHER SIDE



10 PICKS/BLOCK

5 DARK + 5 LIGHT

